



## Contact activation of kallikrein–kinin system by superparamagnetic iron oxide nanoparticles *in vitro* and *in vivo*

Dmitri Simberg<sup>a,\*</sup>, Wan-Ming Zhang<sup>b</sup>, Sergei Merkulov<sup>b</sup>, Keith McCrae<sup>b</sup>, Ji-Ho Park<sup>c,d</sup>, Michael J. Sailor<sup>c,d,e</sup>, Erkki Ruoslahti<sup>f</sup>

<sup>a</sup> Nano Tumor Center of Excellence for Cancer Nanotechnology, Moores UCSD Cancer Center, 3855 Health Sciences Drive, La Jolla, CA 92093, USA

<sup>b</sup> Department of Medicine, Case Western Reserve University School of Medicine, 2103 Cornell Rd, Cleveland OH 44106, USA

<sup>c</sup> Materials Science and Engineering Program, University of California, San Diego, La Jolla, California 92093, USA

<sup>d</sup> Department of Chemistry and Biochemistry, University of California, San Diego, La Jolla, California 92093, USA

<sup>e</sup> Department of Bioengineering, University of California, San Diego, La Jolla, California 92093, USA

<sup>f</sup> Vascular Mapping Center, Burnham Institute for Medical Research at UCSB, 1105 Life Sciences Technology Bldg, University of California Santa Barbara, CA 93106, USA

### ARTICLE INFO

#### Article history:

Received 15 April 2009

Accepted 28 May 2009

Available online 7 June 2009

#### Keywords:

Kallikrein  
Iron oxide  
Nanoparticles  
Plasma  
Kininogen  
Tumor

### ABSTRACT

Previously we reported that plasma kallikrein and high molecular weight kininogen attach to the surface of dextran-coated superparamagnetic iron oxide nanoparticles (SPION) through the incompletely covered iron oxide core (Simberg et al., *Biomaterials*, 2009). Here we show that SPION also activate kallikrein–kinin system *in vitro* and *in vivo*. The serine protease activity of kallikrein was stably associated with SPION and could be detected on the nanoparticles even after extensive washing steps. The enzymatic activity was not detectable in kininogen-deficient and Factor XII-deficient plasma. The enzymatic activation could be blocked by precoating SPION with histidine-rich Domain 5 (D5) of kininogen. Importantly, the kallikrein activity was detectable in plasma of SPION-injected, but not of D5/SPION-injected mice. Tumor-targeted SPION when injected into kininogen-deficient and control mice, produced high levels of vascular clotting in tumors, suggesting that kallikrein activation is not responsible for the nanoparticle-induced thrombosis. These data could help in understanding the toxicity of nanomaterials and could be used in designing nanoparticles with controlled enzymatic activity.

© 2009 Elsevier B.V. All rights reserved.

### 1. Introduction

Basic understanding of interactions of nanomaterials with the body milieu is important for development of efficient drug delivery and imaging reagents. Upon injection into the blood, nanomaterials undergo extensive interactions with plasma proteins and cells [1] and become coated (opsonized) with various plasma proteins. The opsonization promotes nanoparticle clearance and toxicity. For example, absorption of complement factors makes the nanoparticles recognizable by macrophages through complement receptors, and in parallel induces toxicity by activation of downstream complement pathways [2].

Superparamagnetic iron oxide nanoparticles (SPION) are a widely used MR contrast imaging reagent [3]. SPION have been recently explored for targeted imaging of tumors. In these applications, SPION that were coated with targeting ligands achieved enhanced localization in the tumor tissue, greatly improving the imaging contrast by MRI [4] or by optical imaging [5]. Previously, we described the specific intravascular tumor clotting induced by SPIO coupled to homing peptide CREKA. This phenomenon is reminiscent of contact clotting activation of biomaterials [6], with the exception that thrombosis was

restricted to tumors. We also recently reported [7] the specific assembly of histidine-rich plasma proteins, such as high molecular weight kininogen and histidine-rich glycoprotein, on the exposed iron oxide of dextran-coated SPION.

Here we show that following contact of SPION with mouse or human plasma the nanoparticles acquire kallikrein enzymatic activity through binding of kallikrein–kinin-system to the exposed iron oxide on the nanoparticle's surface. Notably, this activity persists even after isolation of nanoparticles from plasma, and could be controlled through surface modification of nanoparticles. Although we demonstrate that the activation of kallikrein–kinin system does not play a role in the previously described prothrombogenic activity of SPION in tumor blood vessels [5], the controlled activation of kallikrein on the surface of SPION could be potentially used for design of smart proteolytic nanoparticles.

### 2. Materials and methods

#### 2.1. Nanoparticles and plasma

Plain surface and aminated surface dextran-coated superparamagnetic iron oxide nanoparticles were synthesized in the laboratory of Dr. Sailor, UCSD [8]. Feridex™ iron oxide nanoparticles were obtained

\* Corresponding author.

E-mail address: [dsimberg@ucsd.edu](mailto:dsimberg@ucsd.edu) (D. Simberg).

from the UCSD Department of Radiology. The level of amination of SPION was varied by adding different concentrations of ammonia to epichlorohydrin-activated SPION [8]. The level of amination was determined as following. One hundred microliters of SPION solution in PBS (1 mg/ml) was mixed under vortexing with 10  $\mu$ l of 0.1 mg/ml DMSO solution of FITC (Sigma). After 1 h incubation, particles were precipitated once with 600  $\mu$ l of 95% ethanol and spun at 14,000 rpm for 10 min. One hundred  $\mu$ l of the supernatant was mixed with 600  $\mu$ l PBS and 10  $\mu$ l ammonia, and the absorbance was measured at 492 nm. The amount of the reacted FITC was calculated by subtracting OD of the supernatant from OD of FITC solution (processed as above but with PBS added instead of the particles) and dividing by the molar extinction coefficient of FITC (78000). Pentapeptide CREKA labeled with fluorescein was conjugated using maleimide chemistry to the activated nanoparticles as described before [5]. Zeta potential was measured using Zetasizer instrument (Malvern). Fine glass microparticles were prepared by grinding pieces of a Pasteur pipette into powder with mortar and pestle.

Citrated human or mouse plasma were collected and stored at  $-80^{\circ}\text{C}$ . Factor XII deficient plasma was purchased from George King Bio-Medical. High molecular weight kininogen-deficient mouse plasma was from the laboratory of Dr. McCrae [9]. Glutathione-S-transferase (GST)-fusion histidine-rich domain 5 (D5) of mouse high molecular weight kininogen was from the same laboratory. For western blotting, the following antibodies were used: goat anti-mouse kallikrein antibody (R&D) and rabbit anti-mouse kininogen (provided by Dr. McCrae).

## 2.2. Nanoparticle interaction with plasma proteins

To determine whether nanoparticles attract specific clotting factors following incubation in citrated plasma, 0.3 ml of mouse plasma were incubated with 100  $\mu$ g SPION, washed 4 times in PBS with recovery of SPION by ultracentrifugation at 100,000 g for 10 min, and then eluted the bound proteins from SPION with 8 M urea/1 M NaCl. Eluted proteins were then separated by SDS-PAGE and identified by western blotting using specific antibodies.

## 2.3. Measurement of kallikrein activation in vitro

One hundred microliters of iron oxide nanoparticles (1 mg/ml) were incubated with 0.5 ml of a 1:10 diluted plasma in PBS for 5 min at room temperature. Kallikrein inhibitor aprotinin (Sigma) was used at a final concentration 0.5 mg/ml. For testing the inhibitory effect of kininogen D5 domain, 100  $\mu$ g iron oxide were preincubated for 5 min with 20  $\mu$ g of GST-D5 or GST, before adding plasma as above. To test the effect of washing on the enzymatic activity of the plasma protein-coated nanoparticles, the latter were washed 2 times with 1 ml PBS by ultracentrifugation. The supernatant was discarded, and the nanoparticle pellet or the same volume of control plasma (20  $\mu$ l) was resuspended in 100  $\mu$ l PBS. Following incubation with plasma, 100  $\mu$ l of kallikrein chromogenic substrate (Chromogenix S-2302, DiaPharma) were added and the mixture was incubated on a water bath for 50 min at  $37^{\circ}\text{C}$ . SPION strongly absorb at 405 nm, which is also the absorbance wavelength of the kallikrein substrate. Therefore, for practical reasons, in the majority of the experiments the particles were pelleted by ultracentrifugation after the incubation, and the absorbance of the supernatant was measured using microplate reader. Whenever enzyme kinetics was measured, the cleavage of the substrate was monitored by reading the absorbance at 405 nm at 15 s intervals for 10 min using absorbance microplate reader (Molecular Devices, Sunnyvale, CA, U.S.A.). The initial absorbance of SPION was then subtracted.

## 2.4. Mouse experiments

All animal work was reviewed and approved by Burnham Institute's Animal Research Committee. SPIONs were preincubated with kininogen D5, or with PBS. For intravenous injections, 8 week old BALB/c mice were

anesthetized with intraperitoneal Avertin. Nanoparticles (1–4 mg Fe/kg body weight) were injected into the tail vein. Thirty minutes post-injection, mice were anesthetized and 200  $\mu$ l of blood was collected with a syringe through the left ventricle, using 0.4% sodium citrate as an anticoagulant. Plasma was separated from cells by centrifugation at 5000 g for 10 min, diluted 10-fold in PBS and incubated with chromogenic substrate with or without aprotinin as described above. The kallikrein activity was measured as described for in vitro experiments.

For tumor homing experiments, we used mice with the disrupted Kng1 gene that lacked plasma kininogens. Eight-to-ten week-old kininogen-deficient and wild type female mice (C57BL/6 background) were injected with  $1 \times 10^6$  B16/F1 melanoma cells s.c. After tumors had grown to 1 cm diameter, mice were injected intravenously with CREKA-SPION as described [5]. Six hours later the mice were sacrificed and the tumors were processed for histological examination as described [5].

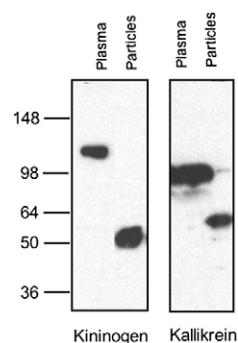
## 3. Results and discussion

### 3.1. Kallikrein activation by SPION in vitro

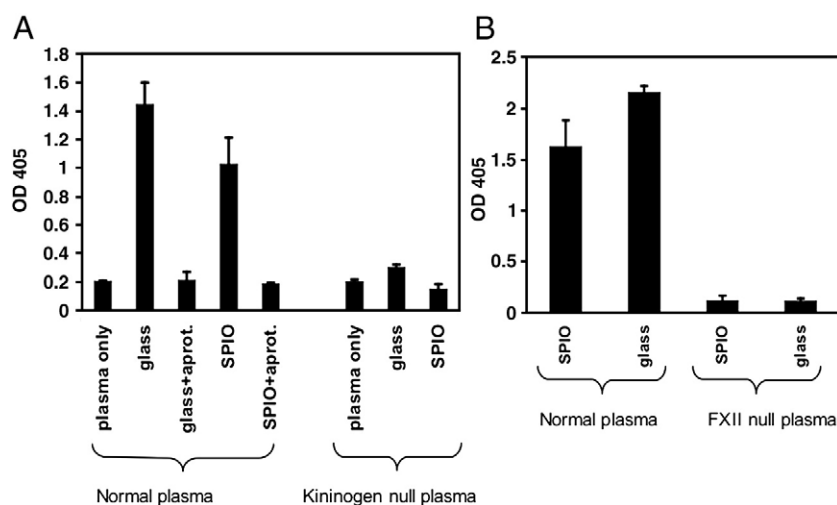
We previously reported that SPION absorb significant amounts of kininogen and kallikrein [10] on their surface. To analyze the pattern of binding of these proteins to the nanoparticles, we performed immunoblotting with specific antibodies against kallikrein and kininogen, comparing the proteins attached to SPION with native plasma. Both kininogen and kallikrein were present on the particles but were cleaved into fragments, as indicated by their faster migration than that of the parent proteins, 120 kDa high molecular weight kininogen and 88 kDa kallikrein precursor (Fig. 1).

These cleaved products were not detectable in normal plasma, only in plasma absorbed on SPION, suggesting that the cleavage took place as a result of binding to the nanoparticles.

The kallikrein-kinin system is known to assemble and become activated on foreign surfaces [10]. Kallikrein usually circulates in plasma in an equimolar complex with kininogen [11]. To measure the enzymatic activation of kallikrein, a serine protease, following the interaction between plasma and the nanoparticles, we used a specific chromogenic substrate (see Materials and methods). The activation was tested in both mouse and human plasma. We used fine glass microparticles as a positive control for kallikrein activation. We observed that both glass particles and SPION were powerful activators of kallikrein in plasma (Fig. 2A). Next, we used aprotinin, which inhibits kallikrein, but not factor FXII, to exclude the contribution of FXII to the observed proteolytic activity. This activation was inhibited by approximately 90% by aprotinin, suggesting that kallikrein



**Fig. 1.** Binding of plasma proteins to iron oxide nanoparticles. The nanoparticles were incubated with plasma as described in Materials and methods. Particle-bound proteins were eluted and separated by SDS gel electrophoresis. The proteins were analyzed with specific antibodies against kininogen and kallikrein. Both antibodies were specific for the light chain of the proteins, detecting uncleaved 120 kDa kininogen and 88 kDa kallikrein (arrows), or the cleaved light chain of both proteins (between 50 and 64 kDa size). One representative experiment out of 5 is shown.



**Fig. 2.** Kallikrein activation in human and mouse plasma. Nanoparticles were incubated with diluted citrated plasma and with kallikrein chromogenic substrate as described in Materials and methods. A, Effect of SPION on kallikrein activation in normal and kininogen-deficient mouse plasma; B, Kallikrein activity in human plasma and the role of Factor XII deficiency in the activation. The experiments were repeated 3 times.

primarily contributed to the observed enzymatic activity (Fig. 2A). The same results were obtained when human plasma was used (not shown).

In order to test whether kallikrein is activated by binding through high molecular weight kininogen to SPION, we used human plasma deficient for this protein [9]. The proteolytic activation of kallikrein by SPION was completely absent in plasma deficient for kininogen (Fig. 2A). Also, as shown in Fig. 2B, kallikrein activation was absent in factor FXII deficient human plasma. Factor XII is known to bind to foreign surfaces where it is converted to factor XIIIa, which is mainly responsible for cleavage and activation of kallikrein [10].

To demonstrate that the kallikrein activity results from particle-bound kallikrein, rather than from free plasma kallikrein, nanoparticles were incubated with plasma or PBS and washed as described in Materials and methods. In parallel, plasma without SPION was washed in exactly the same way. The enzymatic conversion of the chromogenic substrate was measured for 10 min. According to the kinetic plot, high residual enzymatic activity was associated with the washed particles that were incubated in plasma, but not with the particles incubated in PBS (Fig. 3A).

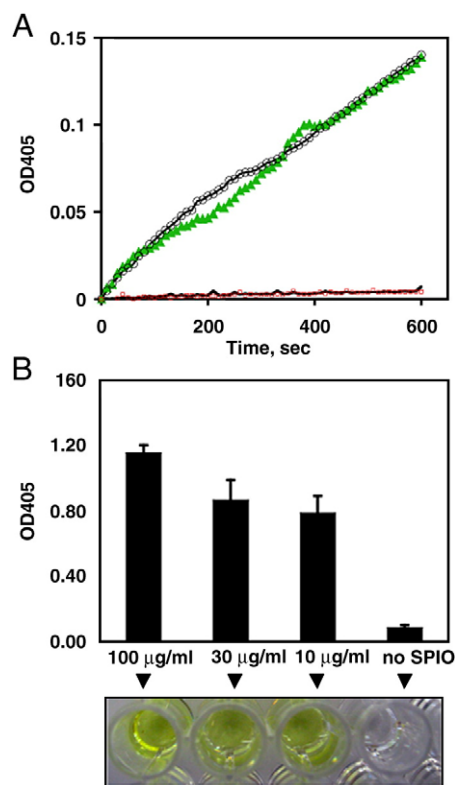
Also, no residual enzymatic activity was found in the control plasma tube (without SPION) that was subjected to the same washings. To assess how much SPION is needed to produce measurable activity of kallikrein, three different concentrations of SPION were tested (Fig. 3B). Judging by the color intensity, the enzymatic cleavage of the chromogenic substrate after 50 min incubation was high for all the concentrations tested (Fig. 3B).

### 3.2. Effect of SPION surface properties on the activation of kallikrein *in vitro*

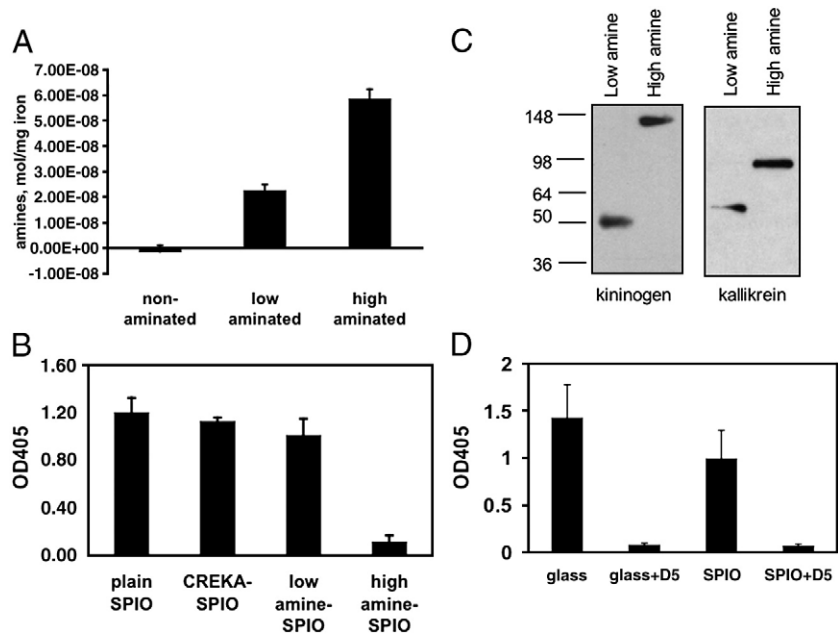
We next tested the role of the nanoparticle surface properties in kallikrein activation. SPION with different amination levels were prepared (zeta potential  $-4.9$ ,  $+1.5$ ,  $+4.8$ , respectively). The level of amination for each type of particle was also quantified as described in Materials and methods (Fig. 4A).

In addition, SPION modified with CREKA, a potent tumor-homing peptide that recognizes clotted plasma [5], were prepared. Non-aminated SPION, low-aminated SPION and CREKA-SPION all produced high levels of kallikrein activation of mouse plasma kallikrein (Fig. 4B). Interestingly, Feridex<sup>TM</sup> nanoparticles that are used clinically for liver MRI, also produced strong kallikrein activation (not shown). At the same time, highly aminated nanoparticles did not activate kallikrein. Western blotting analysis showed that kallikrein was

bound to, but not cleaved on highly-aminated nanoparticles (Fig. 4C). This phenomenon could be attributed to the inactivation of kallikrein, FXII or both upon interaction with the highly basic



**Fig. 3.** Effect of SPION concentration and washing on the activation of kallikrein. A, Effect of washing on kallikrein activity of SPION. Nanoparticles were incubated with plasma or PBS and washed as described in Materials and methods section. In parallel, plasma without added nanoparticles was processed in exactly the same way. Ten microliters of SPION or control plasma were incubated with 50 µl of the chromogenic substrate. The substrate conversion was monitored by reading the absorbance in the kinetic mode over 10 min period. All the samples were run in duplicates. Plasma-coated SPION (green triangles and black circles show different replicates) showed very strong enzymatic activity, while control plasma replicate (blue trace) and control SPION (red trace) show no enzymatic activity (only one replicate of each sample is shown due to the overlapping curves); B, SPION were incubated with plasma at different concentrations, washed 3 times by ultracentrifugation, and the kallikrein activity was visualized by the intensity of yellow color of the chromogenic substrate as described in Materials and methods.



**Fig. 4.** Activation and cleavage of mouse plasma kallikrein by SPION with different amination level. SPION with different amination level (non-, low- or high- amine) or with conjugated peptide CREKA were incubated in plasma, and the kallikrein activity was measured as described in Materials and methods. **A**, Measured levels of amination of SPION as described in Materials and methods. **B**, Kallikrein activity in mouse plasma; **C**, nanoparticles were washed extensively and the bound proteins were analyzed on SDS-PAGE and visualized with anti-kininogen, left, and anti-kallikrein, right. Highly aminated surface prevents cleavage and activation of kallikrein. The experiments were repeated 2 times; **D**, Inhibition of activation of kallikrein by preincubation with Domain 5 of high molecular weight kininogen. The experiment was repeated three times.

surface of nanoparticles. Kininogen also remained uncleaved on the surface of highly aminated SPION (Fig. 4C).

Since kallikrein binds to the iron oxide through the histidine-rich domain 5 of high molecular weight kininogen [7], we tested whether precoating nanoparticles with recombinant D5 (described in Materials and methods) could inhibit or decrease the activation of kallikrein. We previously found that D5 can inhibit binding of both kininogen and histidine-rich glycoprotein to the SPION iron oxide surface [7]. As demonstrated in Fig. 4D, kininogen D5 domain completely inhibited the observed enzymatic activity of kallikrein. Similar inhibition by D5 was observed in human plasma (not shown).

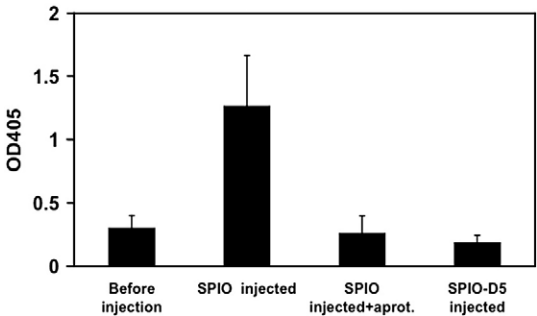
### 3.3. Kallikrein activation in vivo

The artificial surface of nanoparticles provides a scaffold for binding and activation of an enzymatic machinery. In view of stable and efficient activation of kallikrein on the surface of SPION, it would be interesting to know whether intravenously injected SPION are also enzymatically active. To assess that hypothesis, we collected citrated

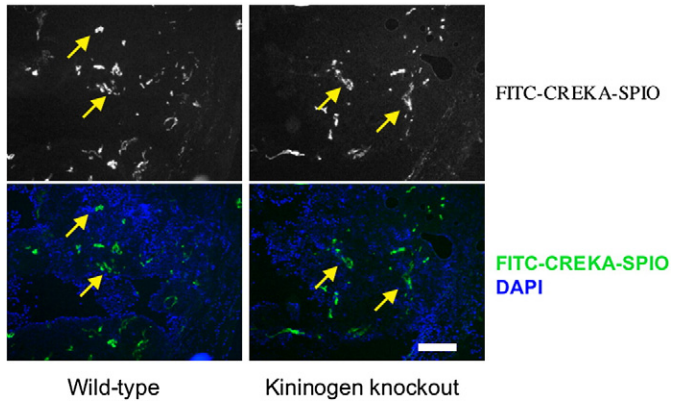
plasma from mice that were injected with plain SPION or D5-coated SPION, and from non-injected control mice (Fig. 5). Plasma isolated from SPION-injected mice showed strong kallikrein activity that was almost completely inhibitable by aprotinin. Remarkably, plasma collected from mice injected with D5-coated nanoparticles was proteolytically inactive, suggesting that, similarly to the *in vitro* results, D5 was able to inhibit the kallikrein activation by nanoparticles *in vivo*.

### 3.4. Role of kallikrein–kinin system in the *in vivo* prothrombotic properties of SPION

The role of the contact clotting pathway in the thrombotic activity of nanomaterials is not clear [6]. SPION coupled to tumor-



**Fig. 5.** Proteolytic activation of nanoparticles after injection *in vivo*. SPION were injected intravenously into mice, the plasma sample was collected at 30 min and analyzed for kallikrein activation as described in Materials and methods. Note that preincubation of SPION with D5 before injection prevented the activation of kallikrein. Addition of aprotinin to plasma collected from SPION-injected mice also blocked the proteolytic activity. The average of two experiments is shown.



**Fig. 6.** Effect of kininogen deficiency on the thrombotic activity of SPION in tumors. CREKA-SPION were injected into tumor-bearing mice as described in Materials and methods, and the tumor distribution of CREKA-SPION was examined 6 h post-injection. Upper images: accumulation of FITC-labeled nanoparticles in the tumors. Lower images: merge of DAPI (nuclei, blue) and fluorescein (nanoparticles, green) fluorescence. In both kininogen-deficient and control mice the entrapment of SPION in thrombi in blood vessels (yellow arrows) was observed. Size bar, 200  $\mu$ m. One representative experiment out of 4 is shown.



homing peptide CREKA promote thrombosis in tumor-specific thrombosis in blood vessels [5]. The thrombosis is initiated by local high concentration of SPION in the lumen and leads to the entrapment of additional nanoparticles in the growing intravascular thrombi, appearing as bright fluorescent aggregates inside tumor vasculature. To investigate the role of kallikrein–kinin system in the tumor clotting by CREKA–SPION, we grew subcutaneous B16/F1 melanoma tumors in high molecular weight kininogen-deficient [9] and wild type mice. The experiments in kininogen-deficient mice did not show any significant decrease in the intravascular clotting (Fig. 6), with both kininogen-deficient and wild-type mice showing massive accumulation of the nanoparticles in the vascular clots. Although contact system is important for clotting activation *in vitro* [10], it is unlikely that activation of kallikrein on the surface of SPION plays a major role in the observed intravascular clotting.

There is a significant interest in delivering active enzymes to tumors for therapy and prodrug activation [11–13]. The biomimetic conversion of nanoparticles into enzymatically-active entities *in vivo* and its regulation by surface modifications is a novel addition to the known functions of nanoparticles, and to our best knowledge, has not been thoroughly investigated before. Tumor-targeted CREKA–SPION localize in the vascular luminal space in tumors (Fig. 6). Our next steps will be focused to determine if CREKA–SPION still maintain their kallikrein activity after homing in the tumor blood vessels. If positive, then the use of this phenomenon could be a prodrug therapy where nanoparticles lodged in tumor vasculature activate a subsequently injected prodrug. The ability of histidine-rich peptides to block the proteolytic activation

of nanoparticles creates a possibility of engineering nanoparticles with controlled enzymatic activity.

### Acknowledgments

This work was supported by National Cancer Institute Grant CA119335 and, in part, by CA124427.

### References

- [1] S.M. Moghimi, A.C. Hunter, J.C. Murray, *Pharmacol. Rev.* 53 (2001) 283–318.
- [2] S.M. Moghimi, H.M. Patel, *Biochim. Biophys. Acta* 984 (1989) 384–387.
- [3] J.W. Bulte, D.L. Kraitchman, *NMR Biomed.* 17 (2004) 484–499.
- [4] E.A. Schellenberger, A. Bogdanov Jr., D. Hogemann, J. Tait, R. Weissleder, L. Josephson, *Mol. Imaging* 1 (2002) 102–107.
- [5] D. Simberg, T. Duza, J.H. Park, M. Essler, J. Pilch, L. Zhang, A.M. Derfus, M. Yang, R.M. Hoffman, S. Bhatia, M.J. Sailor, E. Ruoslahti, *Proc. Natl. Acad. Sci. U. S. A.* 104 (2007) 932–936.
- [6] M.B. Gorbet, M.V. Sefton, *Biomaterials* 25 (2004) 5681–5703.
- [7] D. Simberg, J.H. Park, P.P. Karmali, W.M. Zhang, S. Merkulov, K. McCrae, S.N. Bhatia, M. Sailor, E. Ruoslahti, *Biomaterials* 30 (23–24) (2009) 3926–3933.
- [8] J.H. Park, G. von Maltzahn, L. Zhang, M.P. Schwartz, E. Ruoslahti, S. Bhatia, M.J. Sailor, *Adv. Mater.* 20 (2008) 1630–1635.
- [9] S. Merkulov, W.M. Zhang, A.A. Komar, A.H. Schmaier, E. Barnes, Y. Zhou, X. Lu, T. Iwaki, F.J. Castellino, G. Luo, K.R. McCrae, *Blood* 111 (2008) 1274–1281.
- [10] R.W. Colman, A.H. Schmaier, *Blood* 90 (1997) 3819–3843.
- [11] D.K. Malik, S. Baboota, A. Ahuja, S. Hasan, J. Ali, *Curr. Drug Deliv.* 4 (2007) 141–151.
- [12] C.R. Dass, A.M. Friedhuber, L.M. Khachigian, D.E. Dunstan, P.F. Choong, *J. Microencapsul* 25 (2008) 421–425.
- [13] J. Fang, D. Deng, H. Nakamura, T. Akuta, H. Qin, A.K. Iyer, K. Greish, H. Maeda, *Int. J. Cancer* 122 (2008) 1135–1144.